

## TEAM STATEMENT (GIVEN TO TEAM AFTER CLOCK IS STARTED)

### FIRST AID PROBLEM

You and your team members are part of the mine rescue team exploring the Wildcat No. 2 underground mine after an explosion, when you encounter a barricade, and you hear someone yelling for help. The map told your team that the face is solid, your team has cleared the air in front of the barricade (no contaminants), and you have permission to breach the barricade.

The communications team member informs you that transportation isn't available. Please treat anyone that you find requiring treatment and prepare them for transport.

Please treat all injuries and prepare for transport for when transportation becomes available.

You are required to call out your team's progress and check on transportation every 5-minutes.

You have 30-minutes to complete the problem.

**MARK**

**RESPIRATIONS: 32**

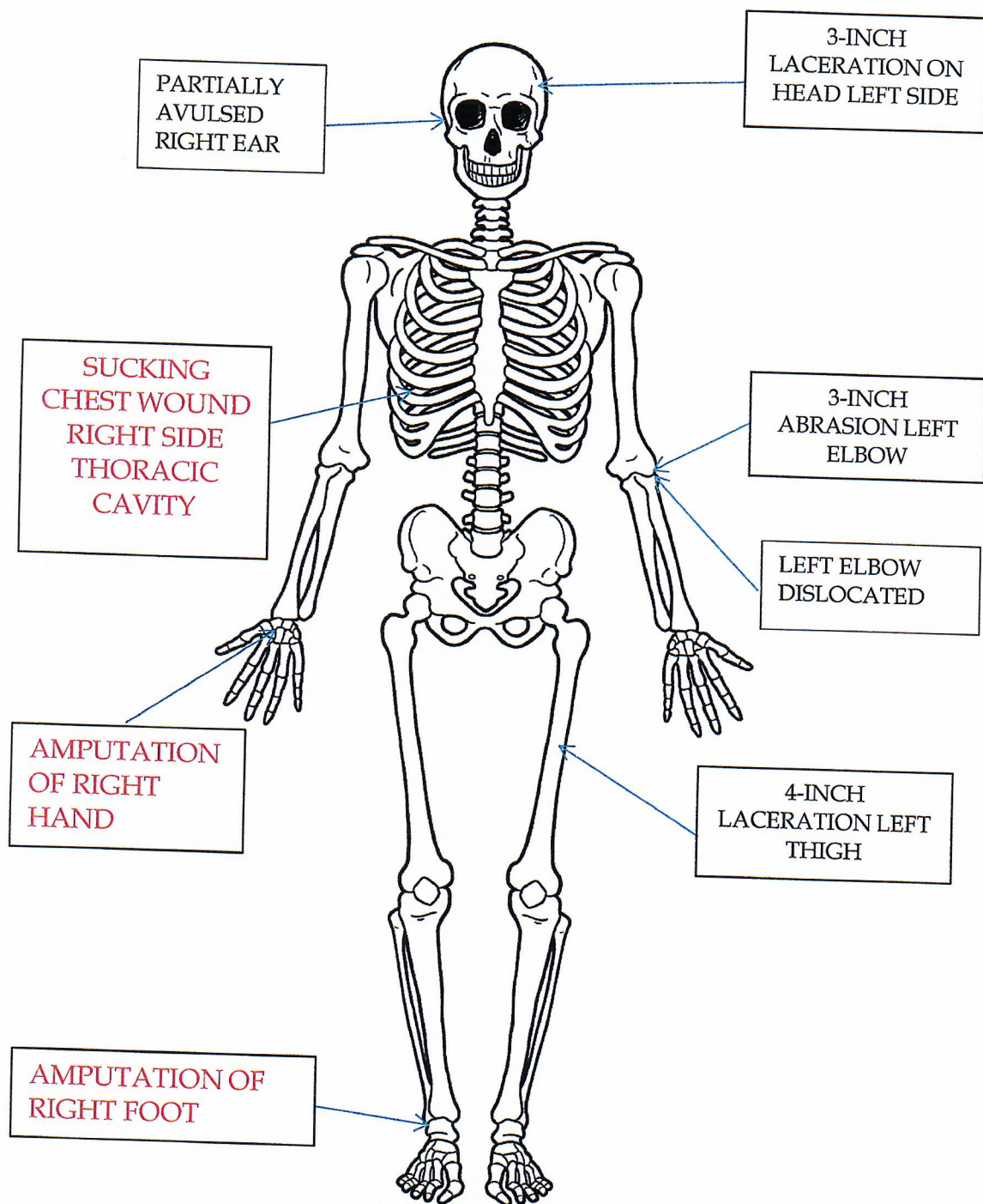
**PERFUSION: > 2 SECONDS**

**MENTAL STATUS: UNABLE  
TO FOLLOW COMMANDS**

## LIST OF INJURIES MARK

- AMPUTATION RIGHT FOOT
- AMPUTATION OF RIGHT HAND
- SUCKING CHEST WOUND RIGHT  
SIDE OF THORACIC CHEST  
CAVITY
- 3-INCH OPEN WOUND ON HEAD LEFT  
SIDE
- AVULSED RIGHT EAR
- 4-INCH LACERATION LEFT THIGH
- 3-INCH ABRASION LEFT ELBOW
- LEFT ELBOW DISLOCATED





www.timvandevall.com  
Copyright © 2014 Dutch Renaissance Press LLC.

**MARK**

**JOHN**

**RESPIRATIONS: <30**

**PERFUSION: < 2 SECONDS**

**MENTAL STATUS: ABLE TO  
FOLLOW COMMANDS**

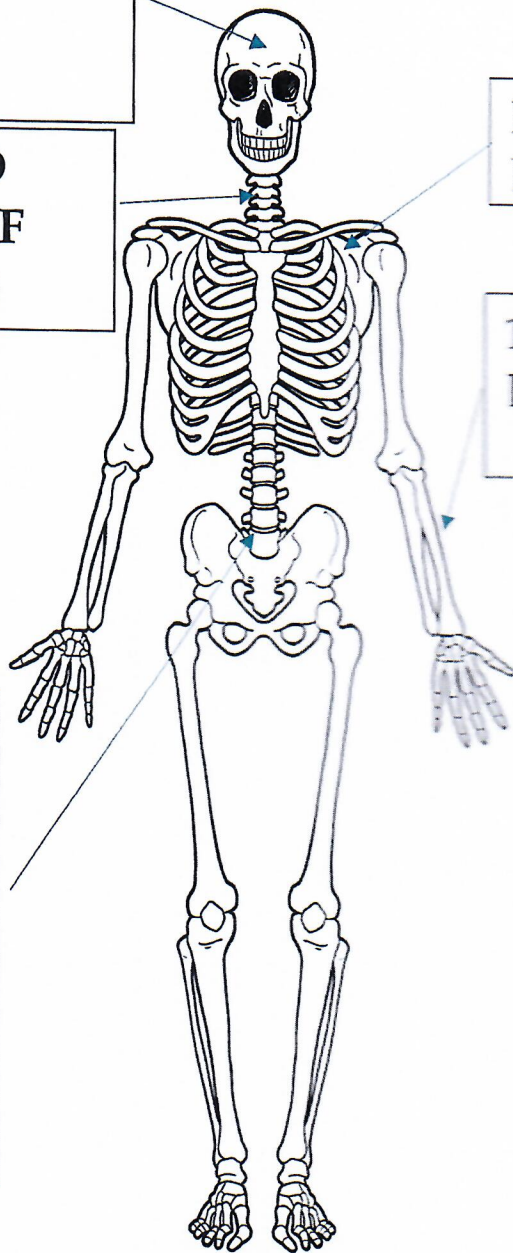
**1-INCH  
CONTUSION IN  
CENTER OF  
FOREHEAD**

**OPEN WOUND  
RIGHT SIDE OF  
NECK (Serious)**

**IMPALED OBJECT  
LEFT SHOULDER**

**1 INCH LACERATION  
LEFT FOREARM**

**5-INCH OPEN  
WOUND IN  
LOWER  
ABDOMEN  
WITH  
INTESTINES  
EXPOSED**



[www.timvandevall.com](http://www.timvandevall.com)  
Copyright © 2014 Dutch Renaissance Press LLC.

**JOHN**

# LIST OF INJURIES

## JOHN

- 1 INCH CONTUSION CENTER OF FOREHEAD
- OPEN WOUND RIGHT SIDE OF NECK (serious)
- IMPALED OBJECT LEFT SHOULDER
- 5 INCH OPEN WOUND IN LOWER ABDOMEN WITH INTESTINES EXPOSED
- 1-INCH LACERATION LEFT FOREARM



# FIELD LAYOUT

